

ACADEMIC PERFORMANCE OF UNDERGRADUATES OF THREE NEW BSC DEGREE PROGRAMS AS AFFECTED BY GENDER AND, A/L STUDY STREAM AND SUBJECT PERFORMANCE

Mudalige SKK¹, Atapattu NSBM^{2*}, Dharmadasa NP¹

¹Dean's Office, ²Department of Animal Science, Faculty of Agriculture, University of Ruhuna, Mapalana, Kamburupitiya, Sri Lanka

ABSTRACT

Objective of this study was to determine the academic performance of undergraduates of three new BSc degree programs as affected by gender and, A/L stream and subject performance. Semester grade point averages (SGPA) over eight semesters and overall grade point averages (OGPA) of 239 undergraduates who followed BSc in Green Technology (GT), Agricultural Recourse Management and Technology (AT) and Agribusiness Management (AB) were analyzed. Significantly higher percentage of GT (91 %), AB (73 %) and AT (70 %) students had followed Biological Science as their Advanced Level (A/L) stream. The contributions of physics, Chemistry and Biology to the final A/L performance of the students who followed biology stream were 30, 33 and 37 %, respectively. Contrary, among those who had followed Agriculture, the contribution of Chemistry (22 %) was significantly lower than that of Biology stream students (33 %). Subject Agriculture contributed 44 % to the final A/L performance of the students who had followed Agriculture in A/L. Nine percent of the students had dropped the undergraduate programs after taking examinations in one or even three semesters while another 20 % have failed to complete the programme within the four-year period. Repeaters were significantly higher among male students and those who had followed Agriculture in A/L. Among GT, AB and AT students, the percentage of graduates with a class was 78, 65 and 56 %, respectively. Among students having first or second Class Upper Division grades, 87 and 65 %, respectively were females. First semester GPA values were significantly different among the three degree programs. Clear increases in SGPA values were seen from 6th semester in GT program and from 4th semester in AB and AT programs, eventually leading to have statistically similar SGPA values in the 8th semester. In all three programmes, there was a significant linear relationship ($r^2=0.90$, $p=0.000$) between OGPA values and the 4th semester SGPA values. The study concludes that students who follow Agriculture stream in A/L get an advantage over those who follow biology stream, in university admission for the BSc degree programs studied. Academic performance of females and, those who followed biology stream was found to better than males and those who followed Agriculture in the Advanced Level, respectively. Lower degree completion rate within the stipulated time, high drop-out rate, gender inequality in academic performance, and deficiencies of the curriculum of A/L agriculture stream are identified as the critical issues to be addressed.

Keywords: Academic performance, Advanced Level, gender, OGPA, SGPA, undergraduates

INTRODUCTION

Having revised and restructured several occasions, the original curriculum of the BSc (Agriculture) Degree program which was introduced in 1978, the Faculty of Agriculture, University of Ruhuna has launched a new Degree program; BSc (Agricultural Resource

Management and Technology) along with two more new degree programs, in 2013. The first cohort of students of each of the above programs was enrolled in 2012 and graduated in 2016.

Regular adjustments in curriculum and assessment of the programmes are among the vital

*Corresponding author: mahindaatapattu@gmail.com

components of a teaching-learning environment of a progressive higher educational institute. Apart from stakeholder opinion, analysis of students' academic performance can also serve as a valuable tool in making adjustments in curriculum and assessments. In general, good exam results encourage students (Artino *et al.* 2010; Abdulghani *et al.* 2012) while increasing their opportunities for employments and higher studies and after-graduation earnings (Smith *et al.*, 2000; Smith and Naylor 2001). Meanwhile, undergraduate level academic performance are influenced by a range of factors including university entrance level qualification, gender, socio-economic background of the students, students personal commitments, learning style, *etc.* (Smith and Naylor, 2001). In a comprehensive study in the UK, across many disciplines, Smith and Naylor (2001) showed that undergraduate performance is positively correlated with A/L results. McKenzie and Schweitzer (2001) showed that performance at university entry accounted for 39 % of the variance in undergraduate performance.

In Sri Lanka, admission of students to state universities is based on A/L performance as determined by Z score. Students who followed either Biology or Agriculture stream can apply for all the Agriculture and related degree programs including AT, GT and AB. Since subject combination of two streams differs markedly, knowledge at the time of university entrance can also be expected to be vary depending on the A/L stream followed. Moreover, due to the complex selection process, the variation among the students as indicated by Z score could also be huge. The objective of the present study was to analyze the undergraduate academic performance of three new degree programs as affected by A/L stream of study, subject performance and, gender. Since one cohort of students completed the whole program of the respective degrees, it is expected that analysis would assist to fine-tune the curriculum and assessment procedures of these degree programs.

MATERIALS AND METHODS

The study was conducted at the Faculty of Agriculture, University of Ruhuna, Sri Lanka. Drop-out rate, semester-wise academic performance and overall grade point average of undergraduates who followed GT (n=48), AB (n=49) and AT (n=142), along with respondents' gender and GCE (A/L) subject-wise gradings were subjected to analysis. Sample characteristics are given in Table 3. Many students failed to recall their Z score. Furthermore, students' subject-wise marks at the A/L examination were not accessible. Therefore, subject-wise academic performance in A/L was considered. A, B, C and S grade were given score of 4, 3, 2 and 1, respectively. Total academic performance was calculated as the sum of scores for all three subjects. For example, a total of 11 points was assigned to a student who had obtained A grades for two subjects and a B grade for the other subject. The contributions of the subject with A, A and B to the total performance were considered 36.36 ($=4/11 \times 100$), 36.36 and 27.28 %, respectively. GT and AB programs were completely new degree programs while AT program can best be regarded as a restructured, revised, renamed version of the previous BSc (Agriculture) degree program. A detailed description of the three programs is available on www.ruh.agri.ac.lk. A summary of the course structure and other basic features are given in Table 1. Up to 4th semester, many courses were common for AB and AT programs. In the 6th semester, AT students mainly engage in farm practice course. Farm practice course is offered as an optional course for AB students. At the end of the 6th semester, students select their specialization areas. Departmental level specialization programs are commenced at the 7th semester followed by a research and dissertation submission in the 8th semester. During the 7th semester, students follow courses offered by his or her specialization areas along with some common courses.

Semester Grade Point Average (SGPA) is calculated using the following formula and students will have grades based on their SGPA (Table 2).

$$\text{SGPA} = \sum C_i G_i / \sum C_i$$

Where,

C_i is the number of credits for i^{th} course

G_i is the grade point obtained for the i^{th} course

The Overall Grade Point Average (OGPA) will be calculated at the end of each semester using the formula;

$$\text{OGPA} = \sum C_{ij} G_{ij} / \sum C_{ij}$$

Where,

C_i is the number of credits for the i^{th} course in the j^{th} semester.

G_i is the grade point obtained for the i^{th} course.

Data were statistically analyzed using Minitab V 14. One sample and two sample t tests, one proportions and two proportions tests were conducted where applicable. SPGA and GPA among three degree programs were analyzed using ANOVA. Means were compared using

Table 1: A summary of the course structure, teaching, and evaluation procedures of the three degree programs studied

Item	Degree program		
	GT	AB	AT
Minimum no of course credits per semester	22	22	22
Total number of compulsory course credits	104	95	114
Minimum requirement of elective course credits	8	18	6
Specialization semesters	7 th and 8 th semester	7 th and 8 th semester	7 th and 8 th semester
Common courses	ICT, Statistics, Career guidance	ICT, Statistics, Career guidance	ICT, Statistics, Career guidance
Industrial training credit number	6	2	2
Research credits	6	6	6
Minimum total credits	124	121	128
Departments involve in teaching	Mainly Agric Engineering and some other Departments for common courses	Mainly Agric Economics and some other Departments for Common courses	All the departments
Specialization selection of students	Mainly Agric Engineering	Mainly Agric Economics	All departments
Research involvement	Mainly to Agric Engineering	Mainly to Agric Economics	All departments
Availability of Optional Courses	From 3 rd semester onward	From 5 th Semester onward	From 5 th Semester onward
Farm practice course	No	Optional	Compulsory; 17 weeks
Assessments	Continuous assessment+ end semester assessment	Continuous assessment+ end semester assessment	Continuous assessment+ end semester assessment
End semester examinations	Written tests (MCQ, essays), practical/spot tests, Viva	Written tests (MCQ, essays), practical/spot tests, Viva	Written tests (MCQ, essays), practical/spot tests, Viva
Contribution from continuous evaluation component	Vary from 20-50	Vary from 20-50	Vary from 20-50

Turkey test. Categorical variables were analyzed using chi-square test. Linear, quadratic, and cubic relationships between SGPA of each semester and OGPA were determined. The best relationship was chosen based on the significance level and the r^2 value.

RESULTS AND DISCUSSION

Table 3 presents the academic performance of undergraduates of three degree programs as affected by gender, A/L stream, and subject performance. There was a good gender balance among the students of GT and AB programs while in AT program, the percentage of female students was significantly higher than males (Table 3). A similar female dominance in Agricultural undergraduate degree programs has been reported in USA as well (Archibeque-Engle, 2016). Gunawardena (2015) showed that the percentage of female undergraduates in Sri Lankan universities increased during last three decades reaching up to 60 % in 2013. In all three programs, the percentages of students who followed Biological science stream were significantly higher than those followed Agriculture stream in their advanced level. A study in Rajarata University (Karalliyadda, 2017) also reported that 74% of the BSc Agriculture undergraduates had followed Biology stream in A/Ls. A majority (62 %) of the students who followed Agriculture stream had been selected to AT

programs while 30 % and 8 % of them had been enrolled to AB and GT degree programs, respectively (Chi square $p < 0.01$). For many of the Districts, minimum Z scores of GT and AB programs were higher than that for AT program (www.ugc.lk). However, due to the selection procedure, Z score varied widely even within the students of a given degree program. The minimum cut-off Z scores in the first round of selection for GT, AB, and AT programs varied with a wide range; from 1.0759 to -0.1595 for AT program, from 1.1459 to -0.1748 for AB program, and from 1.1893 to -0.5175 for GT program. However, it should be noted that some of the students having high Z scores had left the course opting to follow other courses according to their selection option in the university entrance and new students with lower Z scores have been admitted in subsequent rounds of selection. Therefore, the Z-scores of the students who followed the courses could be much lower than what is represented by the initial minimum cut-off Z scores. Meanwhile, GCE (A/L) performance as determined by the performance for each subject showed no significant difference among the students selected to each program. Complexity in the university selection process that involves selection of students from different A/L subject streams, and district quota system could be the reason for above discrepancies. Following sections

Table 2: Scheme of SGPA and GPA calculation

Grading for SGPA calculation			Designation of classes according to OGPA	
Marks (%) (Out of 100)	Grade	Grade Points	SGPA	Grade
≥ 85	A+	4.0	$OGPA \geq 3.70$	First Class
80 - 84	A	4.0	$3.30 \leq OGPA < 3.70$	Second Class Upper Division
75 - 79	A-	3.7	$2.70 \leq OGPA < 3.30$	Second Class Lower Division
70 - 74	B+	3.3	$2.00 \leq OGPA < 2.70$	Pass
65 - 69	B	3.0	$OGPA < 2.00$	Fail
60 - 64	B-	2.7		
55 - 59	C+	2.3		
50 - 54	C	2.0		
45 - 49	C-	1.7		
40 - 44	D	1.3		
40 >	F	0		

Table 3: Academic performance of undergraduates of three degree programs as affected by gender, A/L stream, and subject performance

Item	Degree program			Total	Stat
	GT	AB	AT		
Total no	48	49	142	239	
Female (%)	51	54	62*	57	1 sample proportion
A/L Stream					
Agriculture (%)	9*	27*	30*	24*	Two sample proportions
Biological Science (%)	91	73	70	76	
A/L performance					
(median)	7	7	7	6	ns (Kruskal Wallis ns (ANOVA))
(mean)	6.81±0.28	6.91±0.17	7.12±0.12	7.00±0.11	
% contribution of each subject					
Subject	Agriculture	Biological science			
Physics	0	30			
Chemistry	22	33			***
Biology	34	37			ns
Agriculture	44	0			
Total (%)	100	100			
Undergraduate level performance					
Parameter	GT	AB	AT	Total	
Mid way drop out %		11	14	7	9
Referred	6	24	22	20	
Pass	14	11	22	18	
Second Lower	22	22	21	21	Chi square = 0.03
Second Upper	42	32	29	32	
First class	16	11	6	9	
Total (%)	100	100	100	100	
Academic Performance					
	A/L stream				
	Agriculture	Biological Science			
Referred	26	12			Academic performance vs A/L Stream Chi Square =0.01
Pass	29	20			
Second Lower	29	16			
Second Upper	13	38			
First class	3	14			
Total (%)	100	100			
Academic Performance					
	Gender				
	Male	Female			
Referred	55	45			Academic performance vs gen- der 0.01
Pass	63	37			
Second Lower	46	54			
Second Upper	35	65			
First class	13	87			
Total (%)	100	100			
Gender					
		OGPA			
Male	3.20±0.09**	3.09±0.09*	2.87±0.07*	3.05±0.05**	Gender effect P=0.00
Female	3.45±0.09	3.34±0.08	2.22±0.05	3.34±0.04	
Whole batch	3.32±0.06 ^a	3.22±0.06 ^{ab}	3.05±0.04 ^b	3.05±0.03	Degree program
A/L Stream					
Agriculture	3.30±0.23	3.05±0.12	2.97±0.08	3.02±0.04	A/L stream effect
Biological Science	3.34±0.07	3.29±0.07	3.14±0.05	3.23±0.07*	

discusses a number of negative implications arisen from the above situation.

Main difference of the subject combinations of A/L Agriculture and Biology stream is the Agriculture students' omission of Physics in place of Agriculture. Differences between above subject combinations and the contribution of each subject to the final A/L performance on which university selections are determined, highlighted a number of important issues. The contributions of Physics, Chemistry and Biology to the final A/L performance of the students who followed Biology stream being 30, 33 and 37 % were found to be well balance. Contrary, among those who had followed Agriculture, the contribution of Chemistry, Biology and Agriculture were 22, 34 and 44 %, respectively. Apart from no contribution from Physics, the contribution of Chemistry was also significantly lower among Agriculture stream students (22 %) than Biology students (32 %). Having contributed 44 % to the final A/L performance, the subject Agriculture seems to be disproportionately benefited to the students who had followed Agriculture in A/L for the university entrance. Consequently, some of the better students who have done Biology stream which includes Physics as a subject might have missed the opportunity of university entrance due to easiness of the Agriculture paper and/or the subject combination of the Agriculture stream; *i.e.* opting out of Physics.

McKenzie and Schweitzer (2001) showed that university entry performance accounted for 39 % of the variance in university GPA. Meanwhile, studies done in Faculties of Agriculture in Rajarata University of Sri Lanka (Weerahewa *et al.*, 2013) and Ruhuna University (Mudalige *et al.*, 2008) found that the performance at the Advanced Level examination, as measured by the Z score, had no influence on undergraduate academic performance. However, results of the present study revealed that, though the students had studied subject Agriculture for two years during their A/Ls,

academic performance of the students who followed Agriculture stream was lower than that of Biology stream students (Table 3 and Fig 1). This suggests that compared to Agriculture, A/L Biology stream better prepares students to effectively follow the three programmes considered. Hazari *et al.* (2007) showed a strong relationship between the level of high school Physics knowledge and undergraduate performance. Omission of Physics and lower performance in Chemistry may place the students who follow Agriculture stream at a disadvantageous position in following the GT, AB and AT degree programs which require a sound understanding in Physics and Chemistry. Poor undergraduate-level performance of the students who got selected through A/L Agriculture stream suggest the need of revisions for A/L Agriculture curriculum.

Undergraduate level performance

As high as 14 and 11% of the AB and GT students have dropped the respective programs after sitting examinations in one or even three semesters. Although, such mid-way drop outs were low (7 %) among AT students, the overall drop-out rate was around 9 %. Contrary to Sonnert and Fox (2012) who pointed out that students with high SGPA at initial semester are less likely to drop-out the courses, among those who dropped-out, there were students having both good as well as very low SGPA values. Given that enrolment for the Agricultural and Science-based courses are reported to be substantially lower than their capacities, results of this study emphasizes the need of interventions to retain those who have enrolled. Reasons for drop outs are complex and diverse (Willging and Johnson, 2009). Apart from personal and academic counseling mechanisms, careful curricula designing and assessment methods both in university and in GCE (A/L) examinations are important.

In a comprehensive study considering a wide range of degree programs in the UK, Smith and Naylor (2001) showed that the percent-

ages of first classes, second uppers, second lowers, third classes and failures were 8, 40, 27, 4 and 13 %, respectively. In line with above reports among GT, AB and AT students, the percentage of graduates with a class was 78, 65 and 56 %, respectively. An analysis done by Mudalige *et al.* (2010) on the academic performance of the BSc (Agriculture) program (a predecessor of the present AT program) showed even higher percentage (71 %) of graduates with a class. The percentage of first classless among GT students was two times higher than the level reported by Mith and Naylor (2001).

Twenty percent of the undergraduates have failed to complete the courses within four year period. Since no repeat examinations are conducted, those repeat students have to wait at least another year to graduate. Such repeating students are high among AB (24 %) and AT students (22 %) than GT (6 %) cohorts. Furthermore, repeaters were significantly higher among those who followed Agriculture in A/L (26 %) than among those who followed Biology stream (12 %). This observation further supports the argument that there exists a mismatch between knowledge and skills that A/L Agriculture syllabus imparts and what University expects at the enrollment.

Smith and Naylor (2001) showed that academic performance of female Agriculture undergraduate students was significantly lower than that of male students. Contrary to them, across all three degree programs and eight semesters, female outperformed male students. Among students who secured either first or second uppers 87 and 65 %, respectively were females. Among repeaters also, majority were male students. Since many competitive employments and postgraduate opportunities require second upper or first classes, poor academic performance of male graduates may have numerous implications in their future careers and thus needs to be addressed.

In line with the situation in Agricultural Technology and Management degree programs, offered by the Faculty of Agriculture, University of Peradeniya (Weerahewa *et al.*, 2012), among students who secured either first or second uppers 87 and 65 %, respectively were females. Among repeaters also, many were males. Fox (2012) also showed that in a range of degree programs, female undergraduates achieved higher GPA values than male students. SGPA values of all three degree programs were numerically higher among the students who followed Biology stream than those followed Agriculture. When averaged across all three degree programs, those who followed Biology have achieved higher OGPA value compared to those who did Agriculture.

SGPA values of the students in all eight semesters are shown in Figure 1. First semester SGPA values of all three programs were significantly higher than that Rajarata University Undergraduates (2.2117) reported by Karaliyadda (2017). Suggesting a marked increase in undergraduate performance, the first semester SGPA values reported in this study for all three degree programs were significantly higher than that of the BSc Agriculture degree program (2.4834) offered by the same Faculty, back in 2008 (Mudalige *et al.*, 2012). SGPA values of the students following three degree programs were significantly different in the first semesters. Meanwhile, SGPA values in 6th and 8th semesters were not statistically different among three degree programs. It is interesting to note that irrespective of the marked differences in academic performance in other semesters, performance in 6th and 8th semesters, during which they mainly engage in field/on farm trainings and research projects, respectively were similar.

GT students' SGPA values over the eight semesters could best be described as a significant quadratic relationship. Among GT students, SGPA reduced during first three semesters, then increased in the fourth semester and maintained at a more or less similar level dur-

ing 5th and 6th semesters. During 7th and eighth semester, SGPA values were increased again. Despite a peculiar increase in the 3rd semester, AB students showed significant linear increase in their SGPA values as they progress the semesters. AT students' SGPA value showed a significant quadratic relationship with the progression of academic program. Both among AT and AB students, there was a clear increase in SGPA values from 4th semester onward eventually resulting in a similar SGPA values among the students of all three programs studied.

Interestingly, irrespective of the degree program, students performed extremely better in their research component; *i.e.* 8th semester. Almost 50 % of the students had achieved A⁺ or A while another 30 % had achieved A- for their research project. A⁺ or A grading for research project was higher among AT students (44 %) than among GT (19 %) or AB students (29 %). Significant linear relationships were observed between OGPA and the

fourth semester SGPA for GT (OGPA = $0.8908 + 0.7248$ SGPA Sem 4), AB (OGPA = $1.066 + 0.6966$ SGPA Sem 4) and AT (OGPA = $0.8908 + 0.7248$ SGPA Sem 4) programs ($r^2=0.90$, $p=0.000$).

CONCLUSION

Results of the present analysis conclude that the students who followed Agriculture stream in Advanced Level examination get an advantage in university entrance. However, poor performance in Chemistry and the omission of Physics in advanced level were found to have negative impact on their undergraduate level performance. High mid-way drop-outs and low rate degree completion at the first attempt and the poor academic performance of the male undergraduates were the major issues to be addressed. In conclusion, results of the present study emphasize the need of close collaboration between universities and secondary education sector in curriculum designing, assessments, and university selection process.

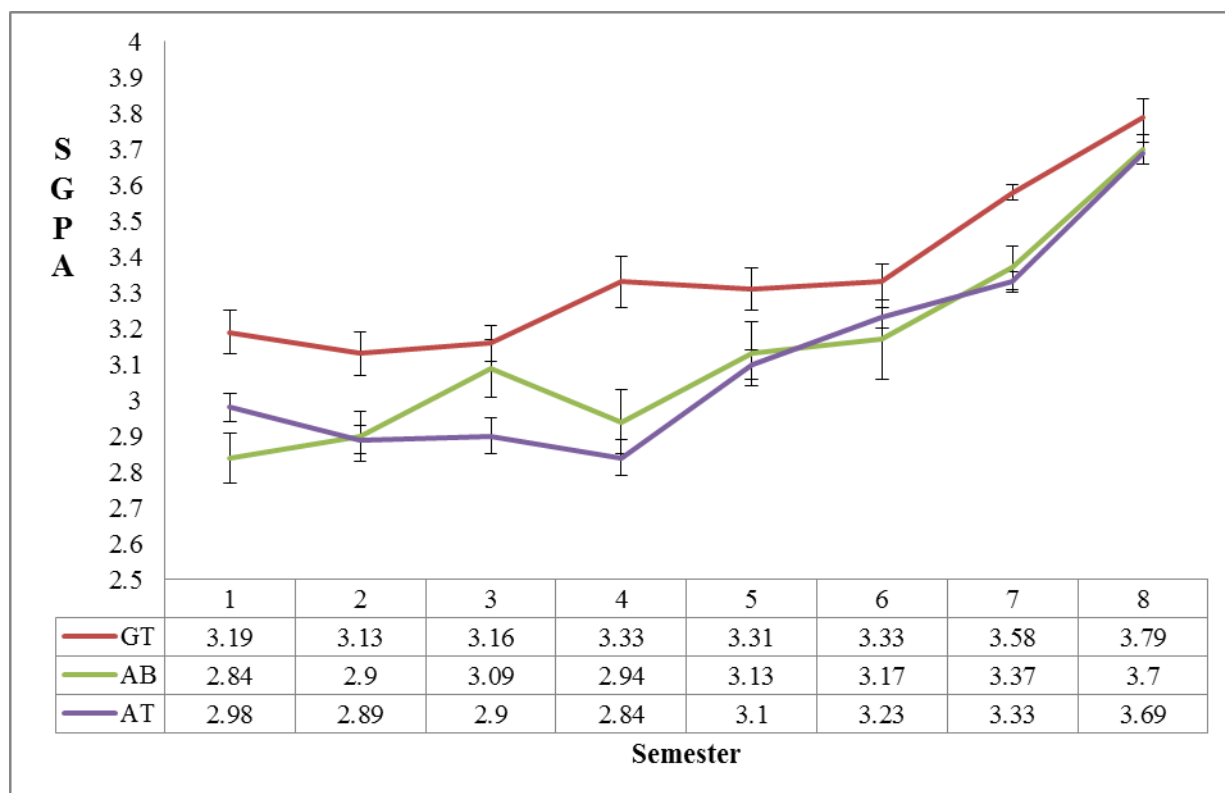


Figure 1: SGPA values of the students in all eight semesters

REFERENCES

- Abdulghani HM, Alrowais NA, Bin-Saad NS, AL-Subaie NM, Haji AM, AlHaqwi AI 2012 Sleep disorder among medical students: Relationship to their academic performance. *Medical Teaching*. 34:S37–S41.
- Artino AR, La Rochelle JS, Durning SJ 2010 Second-year medical students' motivational beliefs, emotions, and achievement. *Medical Education* 44 (12):1203–1212
- Archibeque-Engle, SL and Gloeckner G 2016 Comprehensive Study of Undergraduate Student Success at a Land Grant University College of Agricultural Sciences, 1990-2014. *NACTA Journal*, 60(4): 432.
- Gunawardena NS 2015 Women in Sri Lanka: achievements and challenges. *Journal of the College of Community Physicians of Sri Lanka*, 20(1). Pp 4-23.
- Hazari Z, Tai RH and Sadler PM 2007 Gender differences in introductory university physics performance: The influence of high school physics preparation and affective factors. *Science Education*, 91(6), pp.847-876.
- Karalliyadda SMCB 2017 Learning Style and Academic Performance of First Year Agricultural Undergraduates: A Case in Rajarata University of Sri Lanka. *Journal of Agricultural Sciences*, 12(1): 34-42.
- McKenzie K and Schweitzer R 2001 Who succeeds at university? Second-year medical students' motivational beliefs, emotions, and achievement. *Medical Education*. 44(12): 1203–1212.
- Mudalige SKK, Atapattu NSBM & Rangoda BDP 2010 Three decades: Two curricula: An analysis of the results of B.Sc. Agriculture graduates of Ruhuna University. *Proceedings of the 7th academic sessions of Ruhuna University*: 60.
- Mudalige SKK, Rangoda BDP and Atapattu NSBM 2008 From Z score to semester grade point average: An analysis. *Proceedings of the 5th Academic Sessions of University of Ruhuna, Sri Lanka*: 207.
- Smith J, McKnight A and Naylor R 2000 Graduate employability: policy and performance in higher education in the UK. *The Economic Journal*, 110(464): 382-411.
- Smith J and Naylor R 2001 Determinants of degree performance in UK universities: a statistical analysis of the 1993 student cohort. *Oxford Bulletin of Economics and Statistics*, 63(1), pp.29-60.
- Sonnert G and Fox MF 2012 Women, men, and academic performance in science and engineering: The gender difference in undergraduate grade point averages. *The Journal of Higher Education*, 83(1): 73-101.
- Weerahewa J, Bulathwela S, Silva P and Perera K 2013 An Analysis of Academic Performance of Undergraduates: Effects of Academic Vis-A-vis Non-Academic Factors. *Proceedings of the Peradeniya University Research Sessions, Sri Lanka*. http://scholar.googleusercontent.com/scholar?q=cache:RJLtsVZzwasJ:scholar.google.com/+An+Analysis+of+Academic+Performance+of+Undergraduates+Weerahewa+&hl=en&as_sdt=0,5
- Willging PA and Johnson SD 2009 Factors that influence students' decision to dropout of online courses. *Journal of Asynchronous Learning Networks*, 13 (3): 115-127.